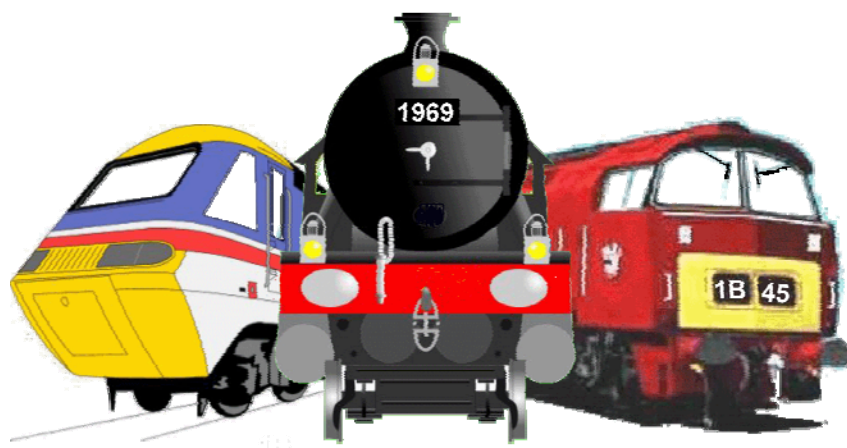
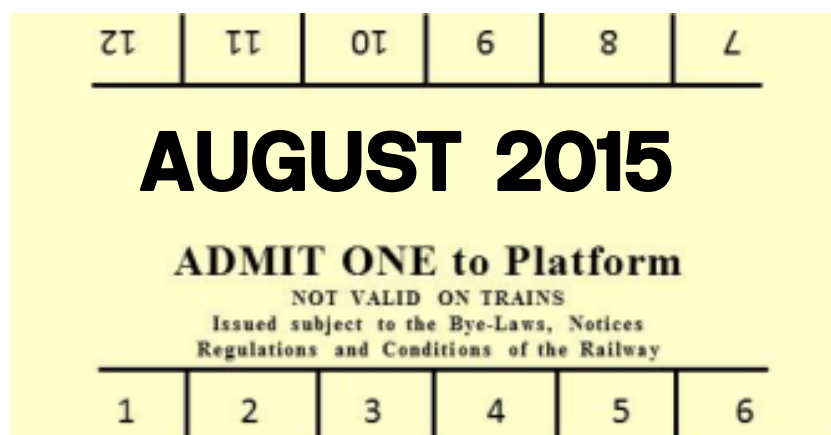


# *Between the Lines*



# Newsletter



# **C O N T E N T S (of key articles)**

From the Editors Cab Window / Club Torque	Page 2
Web site of the month— Olney	Page 3
Northamptonshire Film Archive Film Trust—Around Northamptonshire	Page 4
Spotting day memories—Michael Castledine	Page 5
New builds at Llangollen—Nick Rendell	Page 8
AGM notice / Wednesday meeting times	Page 9
Notice Board	Page 10

## **Rules for Club Night Attendance**

- 1) Please park your vehicle with consideration for the flat occupants when parking outside the Kingsthorpe Community Centre.
- 2) If you make a drink, please wash your cup/spoon up afterwards. Please wipe up any spillages.
- 3) Don't create congestion in the kitchen. Please get your drink and return to the main hall.
- 4) Have you paid your subs? The money is mainly used to pay our Wednesday night hall rental, plus the cost of drinks. £1.50 per person please.
- 5) Please put away any tools, layouts, tables and chairs you've used at the end of the evening.
- 6) A clear passage way **MUST** be maintained in the entrance lobby area as an emergency exit. Also please keep **ALL** other emergency exits accessible at **ALL** times.
- 7) Please sign in at each attendance. This ensures we know who to account for in the event of an emergency evacuation.

## From the Editors Cab Window

As you can see I have produced a newsletter for August. In fact several members have recently sent me articles to include—funny that.

Its like the buses—you don't see one for six months then they all come at once. Ignore my sarcasm and keep sending in your articles please.

*Colin*



## Club Torque

### Next Thursday P.M. Club Meetings

From 14:00—17:00 on the following Thursdays :

- 13th August — Layout working day

### Date of next Committee Meeting

A date for the next committee meeting is TUESDAY 4th August. If there are any items for the agenda, please let Richard have them ASAP.

Email: [rjd156@btinternet.com](mailto:rjd156@btinternet.com)

### Club Night Test Track Dates 2015

5th & 26th August, 16th September, 7th & 28th October, 18th November and 9th December.

**ALL DATES ARE SUBJECT TO CHANGE**



# Web Site of the Month

## THE NORTHAMPTON - OLNEY- BEDFORD (LMS) RAILWAY - A View from Olney

This article was written by Ivor Neale in 2004 when he was approaching his 90th year and relates to his memories as he recalled them. Ivor wished it to be known that his recollections may not always be accurate and offered his apologies if certain events are not quite as others might remember them. Ivor died in April 2010.



<http://www.mkheritage.co.uk/odhs/level3/olneyrailway.html>

## Membership Renewals

All memberships to the N&DMRC fall due on the 1<sup>st</sup> August. Membership rates stay unaltered at Adult £35 per year and Junior members at £10 per year.

I will have some renewal application forms with me from the next meeting.

Just a reminder for those who pay by cheque – they must be made out to *Northampton & District Model Railway Club* and NOT *NDMRC*.

**THE  
NORTHAMPTONSHIRE  
FILM ARCHIVE TRUST**

Registered Charity No. 298527



Present

**A Senior Citizens  
Matinee show**

**AROUND NORTHAMPTONSHIRE**

Do you remember:

The tea drinking parties

Visits to Wicksteed Park

The carnivals and festivals of yesteryear

then come and join us on August 13, for an afternoon of nostalgia as we screen some of these movie films from our archive collection

Admission £3 includes tea and biscuits

**2.30pm**

at

**WELLINGBOROUGH MUSEUM**



Dulley's Baths, 12 Castle Way,  
Wellingborough, NN8 1XB

Phone: 01933 276838

Please be aware that this event will coincide with the Club's monthly Thursday afternoon meeting at Kingsthorpe.

# Spotting Day Memories (Part 1)

by Michael Castledine

I remembered a talk that Richard gave a few years back on Euston Station in the old days and this got me thinking about my spotting days and the first time I toured Scotland with my old friend Bob Faulkner .

The closest I had ever been to the border had been during a holiday to Morecambe with Mum, Dad and my sister in August 1959. A day trip to Carlisle started with the a short journey to Lancaster aboard the old 3 car electric units....long since gone, and the journey north over Shap to Carlisle. I remember the locomotive hauling us was 46201 Princess Elizabeth and during the journey I heard load hissing noises at regular intervals. I found out later that this was the coal pusher in operation. I was left to my own devices upon arrival at Carlisle, lots of new numbers to underline in my Ian Allen Spotters Book, the first ever A2 I had seen was in one of the bay platforms - 60519 Honeywell and also Royal Scot 46113. Cameronian arrived on a southbound express. Enough of that, back to my first Scottish Holiday.

Easter was early April in 1961 as we travelled north from Northampton via the A43 then the A1 and our first shed to be visited was 36E Retford (ex GN); 5 B1 4-6-0s, 1 V2 2-6-2, 2 O2 2-8-0s, 2 J39 0-6-0s and Diesel multiple units at the station, on to Wakefield 56A with a shed count of 53 of which 21 were WD 2-8-0s then to Farnley Junction 55C with 26 locos on shed including 5 of the Jubilee class which never seemed to venture south through Wellingborough. Onwards further north to Skipton 24G, 21 steam on shed including 10 ex LMS 4F 0-6-0s, Hellifield 24H next with 12 steam on shed then on to Penrith, 2 on shed.

In the next instalment Michael crosses the border into Scotland.



Some photos from Michaels spotting days. Although these locations are mentioned in the text, the locos shown and their dates are from another time. All these photos were either taken by Michael or his friend Bob.



Wakefield Shed 56A 11-9-66



Wakefield Shed 56A No 42177 11-9-66



**Retford Shed  
6C No 63975  
on 06-08-60**



**Penrith  
(stabling shed  
to Carlisle  
12B)  
on 16-04-60**



## New Builds at Llangollen by Nick Rendell

I was at the Llangollen Railway on the 10<sup>th</sup> / 11<sup>th</sup> July and on the Saturday morning was very fortunate to be taken around the shed and shown the New Build Projects.



This is of *Cogan Hall* in the yard which has donated its front bogie (and other minor parts) to the *Betton Grange* project. It is still regarded as a long term restoration.



Here are the frames of 6880 *Betton Grange*. It is fortunate Swindon had a policy of standardisation

[Ed - As they say "You either do it the Great Western way or you do it the wrong way". ]

This view in the shed shows the progress made with new build 5551 *The Unknown Warrior*. It was painted BR Green on the other side and numbered 45551.



# **ANNUAL GENERAL MEETING**

Notice is hereby given that the 2015 Annual General Meeting of the Northampton & District Model Railway Club will be held on

**Wednesday 2nd September 2015**  
commencing at **20:00** in the  
**Kingsthorpe Community Centre**  
**Thornton Hall Close**  
**Northampton NN2 6PT**

All members are requested to attend in order that you can have your say in the running of the Club. If there is anything you are not happy with then this is a good time to air your views and opinions. Additionally if you have any ideas to enhance our Club etc then lets hear from you.

## **Wednesday Meeting Times**

During the school holidays we shall be meeting at 19:00 on Wednesdays instead of 19:30. This is because the dancing class that occupy the hall before us on a Wednesday don't meet during this period and we can have the hall.

From and including July 29<sup>th</sup> to and including August 26<sup>th</sup> we shall meet half an hour earlier. Finish time is still 22:00.

# NOTICE BOARD



## TOMBOLA

Will members please bring in a small prize gift each month for the Club's Exhibition Tombola. Keep an eye out for any supermarket special offers for example. A prize should be worth at least £1, be new or in very good condition and if perishable be 'in-date' by the end of September 2015.

There will be a plastic crate in our Club cupboard for tombola items to be collected and stored in.

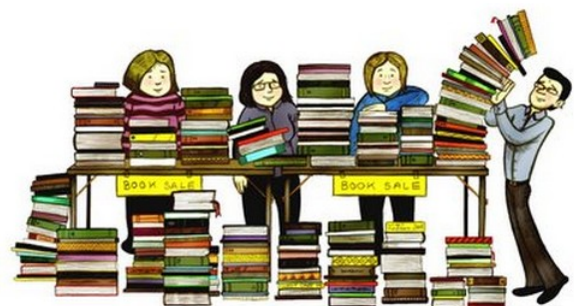
We also need more volunteers to co-ordinate the sticking of cloakroom ticket numbers on the items and fold up matching numbers. But this does not need to be done until nearer the time. If you would like to actually do this for us then please let us know ASAP.

## Table Top Sale

On 21st November 2015 there will be a transport related table top sale of books, models etc. at the Abington Church rooms, Park Avenue North (between Abington Avenue and Ashburnham Road).

The Club will be participating. We need help to man (or woman) our table. We would be appreciate some of our members helping out please— AND NOT BY THE SAME FEW WHO DO EVERYTHING ELSE!

If you can help us please let any committee member know with the times you are available to help.



# Club Information

## Committee Members

Les Pace (Chair Person)  
Colin Tarry (Treasurer / Newsletter Editor)  
Richard Deacon (Secretary)  
Michael Castledine  
Roger Whiffin  
Ralph Morbey

Web site: [www.ndmrc.org](http://www.ndmrc.org)  
Email: [feedback@ndmrc.org](mailto:feedback@ndmrc.org)  
Club Night: Wednesday  
Meeting Time: 19:30—22:00  
Venue: Kingsthorpe Community Centre,  
Thornton Hall Close, Kingsthorpe,  
Northampton, NN2 6PT



Secretary: tel: 01604 890275  
email: [rjd156@btinternet.com](mailto:rjd156@btinternet.com)

## Non Committee Positions

Newsletter Editor Colin Tarry email: [ndmrc@cjbv.org.uk](mailto:ndmrc@cjbv.org.uk)  
Sales Officer John Walker email: [pamjohn38@btinternet.com](mailto:pamjohn38@btinternet.com)

## Club Membership Rates

Club membership runs from August to July or part of the calendar year, and ALL expire on the last calendar day of July, becoming due for renewal on the first of August.

Adult membership £35 per year, Junior membership £10 per year.

## **DISCLAIMER**

Any views expressed in this newsletter are those of the individual contributors and not necessarily those of the Northampton and District Model Railway Club, its Officials or Members unless so stated.